

PROJECTS FOR SPRING/SUMMER 2012 – CLARENCEFIELD QUILTERS



8 & 22 February - QUILTER'S CARRY ALL BAG

A must for every quilter – a bag to carry your mat, rulers, cutters, scissors and everything you need to carry to quilting classes. This project will run over 2 nights.

PACK - £38 (inc. Everything you need to complete bag)



15 February for 5 nights (every two weeks) - JELLY ROLL SAMPLER QUILT (single bed)

First class is on Wednesday 15 February from 6.30 – 9.30 pm. There will be 5 classes to finish the quilt. It uses a Jelly Roll plus 2 metres of complimentary fabric to complete the quilt top.

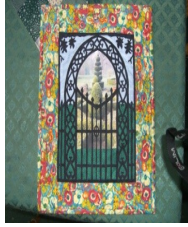
PACK - £45 (quilt top only)



7 & 21 March - QUILTER AT WORK WALL PANEL (approx 28" x 40")

Have you ever wondered what to do with a panel? This panel was found for us by one of my quilters who organised 12 for the class. Learn the art of focus quilting, stitch in the ditch and free machining. This class is run over 2 nights.

PACK - £30 (inc. Borders, backing, wadding, binding)



4 April & 2 May - THROUGH THE GARDEN GATE (small wallhanging approx 16" 22")

Put a photograph of your own garden behind this garden gate. If you can't find a suitable photograph look in a gardening magazine for a garden you would love to own. I'll print it onto fabric for you and then we will use it behind the gate which you will cut out. This class is done over 2 nights. PACK - £20 (inc. Everything you need to complete wallhanging)



16 May - BARGELLO CUSHION (18" square)

Learn the art of Bargello on this cushion. This is a one night class.

PACK - £15 (inc. Everything you need to complete cushion)



23 May - JAPANESE STYLE BAG (approx 18" x 16")

Japanese style woven fabric has been brought in especially for this bag. Ideal for carrying your treasures.

PACK - £30 (inc. Everything you need to complete bag)

SATURDAY CLASSES AT CLARENCEFIELD:



SATURDAY 11 FEBRUARY 10am – 4pm (bring your packed lunch)

JAPANESE QUILT IN A DAY (42" X 52")

This quilt is made with large cuts of fabrics (you don't have to make it in Japanese fabrics – it's great made with kiddie fabrics!). Easily made in one day, we will layer and get the quilting started. PACK £38 (top only)



SATURDAY 7 APRIL 10am – 4pm (bring your packed lunch)

TWISTED NINE PATCH QUILT IN A DAY (single bed size)

Looks complicated but is very easy and quick to do. Made from a pack of 10" squares plus fabrics for both borders and the binding.

PACK £48 single bed top only (can be supplied as double bed size)

Backing fabric and wadding available on request.

Details of classes held at Gracefield are given separately.